



Labour Force Survey Statistics May 2019

CALGARY CMA

Table 282-0135 Labour force survey estimates (LFS), by census metropolitan area based on 2011 census boundaries, 3-month moving average, seasonally adjusted, monthly (persons unless otherwise noted)

	May 2018	April 2019	May 2019	# Change April 2019- May 2019	% Change April 2019- May 2019	# Change May 2018 - May 2019	% Change May 2018 - May 2019
Population (x 1,000)	1,238.9	1,264.0	1,266.4	2.4	0.2%	27.5	2.2%
Labour force (x 1,000)	908.5	937.7	939.7	2.0	0.2%	31.2	3.4%
Employment (x 1,000)	839.2	866.9	873.6	6.7	0.8%	34.4	4.1%
Unemployment (x 1,000)	69.3	70.8	66.1	-4.7	-6.6%	-3.2	-4.6%
Unemployment rate (rate)	7.6%	7.6%	7.0%	-0.6%		-0.6%	
Participation rate (rate)	73.3%	74.2%	74.2%	0.0%		0.9%	
Employment rate (rate)	67.7%	68.6%	69.0%	0.4%		1.3%	

CALGARY CMA

Table 282-0128 Labour force survey estimates (LFS), by census metropolitan area based on 2011 census boundaries, 3-month moving average, unadjusted for seasonality, monthly (persons unless otherwise noted)

	May 2018	April 2019	May 2019	# Change April 2019- May 2019	% Change April 2019- May 2019	# Change May 2018 - May 2019	% Change May 2018 - May 2019
Population (x 1,000)	1,238.9	1,264.0	1,266.4	2.4	0.2%	27.5	2.2%
Labour force (x 1,000)	907.4	932.6	938.4	5.8	0.6%	31.0	3.4%
Employment (x 1,000)	840.1	865.0	876.3	11.3	1.3%	36.2	4.3%
Full-time employment (x 1,000)	691.0	701.2	716.5	15.3	2.2%	25.5	3.7%
Part-time employment (x 1,000)	149.1	163.8	159.8	-4.0	-2.4%	10.7	7.2%
Unemployment (x 1,000)	67.3	67.6	62.2	-5.4	-8.0%	-5.1	-7.6%
Not in labour force (x 1,000)	331.5	331.4	328.0	-3.4	-1.0%	-3.5	-1.1%
Unemployment rate (rate)	7.4%	7.2%	6.6%	-0.6%		-0.8%	
Participation rate (rate)	73.2%	73.8%	74.1%	0.3%		0.9%	
Employment rate (rate)	67.8%	68.4%	69.2%	0.8%		1.4%	

CALGARY CMA

Table 282-0130 Labour force survey estimates (LFS), employment by census metropolitan area based on 2011 census boundaries and North American Industry Classification System (NAICS), 3-month moving average, unadjusted for seasonality, monthly (persons x 1,000)

	May 2018	April 2019	May2019	# Change April 2019- May 2019	% Change April 2019- May 2019	# Change May 2018 - May 2019	% Change May 2018 - May 2019
Total Employed - All Industries	840.1	865.0	876.3	11.3	1.3%	36.2	4.3%
Goods-Producing Sector	189.4	188.8	189.8	1.0	0.5%	0.4	0.2%
Agriculture	3.7	3.3	2.9	-0.4	-12.1%	-0.8	-21.6%
Forestry, Fishing, Mining, Quarrying, Oil and Gas	49.0	57.8	55.8	-2.0	-3.5%	6.8	13.9%
Utilities	9.8	8.0	7.6	-0.4	-5.0%	-2.2	-22.4%
Construction	81.4	68.4	71.4	3.0	4.4%	-10.0	-12.3%
Manufacturing	45.6	51.3	52.2	0.9	1.8%	6.6	14.5%
Services-Producing Sector	650.7	676.2	686.5	10.3	1.5%	35.8	5.5%
Wholesale & Retail Trade	119.1	120.3	119.8	-0.5	-0.4%	0.7	0.6%
Transportation and Warehousing	54.1	53.5	55.1	1.6	3.0%	1.0	1.8%
Finance, Insurance, Real Estate and Leasing	42.7	47.4	49.9	2.5	5.3%	7.2	16.9%
Professional, Scientific and Technical Services	95.0	95.8	96.4	0.6	0.6%	1.4	1.5%
Business, Building and Other Support Services	32.9	37.1	37.1	0.0	0.0%	4.2	12.8%
Educational Services	51.2	48.9	49.8	0.9	1.8%	-1.4	-2.7%
Health Care and Social Assistance	97.4	100.7	101.2	0.5	0.5%	3.8	3.9%
Information, Culture and Recreation	34.3	34.7	32.6	-2.1	-6.1%	-1.7	-5.0%
Accommodation and Food Services	56.7	59.0	59.5	0.5	0.8%	2.8	4.9%
Other Services	38.6	44.2	49.0	4.8	10.9%	10.4	26.9%
Public Administration	28.8	34.6	36.2	1.6	4.6%	7.4	25.7%

Province of Alberta

Table 282-0087 Labour force survey estimates (LFS), by sex and age group, seasonally adjusted, monthly (persons unless otherwise noted)

	May 2018	April 2019	May 2019	# Change April 2019- May 2019	% Change April 2019- May 2019	# Change May 2018 - May 2019	% Change May 2018 - May 2019
Population (x 1,000)	3,463.4	3,510.9	3,516.2	5.3	0.2%	52.8	1.5%
Labour force (x 1,000)	2,484.3	2,518.3	2,515.1	-3.2	-0.13%	30.8	1.2%
Employment (x 1,000)	2,327.5	2,349.8	2,347.6	-2.2	-0.1%	20.1	0.9%
Employment full-time (x 1,000)	1,918.1	1,933.1	1,911.8	-21.3	-1.1%	-6.3	-0.3%
Employment part-time (x 1,000)	409.4	416.7	435.7	19.0	4.6%	26.3	6.4%
Unemployment (x 1,000)	156.8	168.5	167.5	-1.0	-0.6%	10.7	6.8%
Unemployment rate (rate)	6.3%	6.7%	6.7%	0.0%		0.4%	
Participation rate (rate)	71.7%	71.7%	71.5%	-0.2%		-0.2%	
Employment rate (rate)	67.2%	66.9%	66.8%	-0.1%		-0.4%	

Province of Alberta

Table 282-0088 Labour force survey estimates (LFS), employment by North American Industry Classification System (NAICS), seasonally adjusted, monthly (persons x 1,000)

	May 2018	April 2019	May 2019	# Change April 2019- May 2019	% Change April 2019- May 2019	# Change May 2018 - May 2019	% Change May 2018 - May 2019
Total Employed - All Industries	2,327.5	2,349.8	2,347.6	-2.2	-0.1%	20.1	0.9%
Goods-Producing Sector	607.6	598.1	595.5	-2.6	-0.4%	-12.1	-2.0%
Agriculture	49.0	48.6	48.2	-0.4	-0.8%	-0.8	-1.6%
Forestry, Fishing, Mining, Quarrying, Oil and Gas	155.7	153.5	152.4	-1.1	-0.7%	-3.3	-2.1%
Utilities	23.8	23.5	23.1	-0.4	-1.7%	-0.7	-2.9%
Construction	248.5	234.0	233.3	-0.7	-0.3%	-15.2	-6.1%
Manufacturing	130.6	138.4	138.5	0.1	0.1%	7.9	6.0%
Services-Producing Sector	1,719.9	1,751.7	1,752.1	0.4	0.0%	32.2	1.9%
Wholesale & Retail Trade	332.1	337.2	347.4	10.2	3.0%	15.3	4.6%
Transportation and Warehousing	138.5	137.3	140.5	3.2	2.3%	2.0	1.4%
Finance, Insurance, Real Estate and Leasing	104.7	104.6	103.3	-1.3	-1.2%	-1.4	-1.3%
Professional, Scientific and Technical Services	181.3	180.7	181.7	1.0	0.6%	0.4	0.2%
Business, Building and Other Support Services	80.8	91.2	85.7	-5.5	-6.0%	4.9	6.1%
Educational Services	163.7	151.7	152.1	0.4	0.3%	-11.6	-7.1%
Health Care and Social Assistance	275.0	287.4	289.3	1.9	0.7%	14.3	5.2%
Information, Culture and Recreation	79.6	73.1	74.1	1.0	1.4%	-5.5	-6.9%
Accommodation and Food Services	147.2	144.5	140.9	-3.6	-2.5%	-6.3	-4.3%
Other Services	108.3	123.9	119.6	-4.3	-3.5%	11.3	10.4%
Public Administration	108.7	120.0	117.4	-2.6	-2.2%	8.7	8.0%

CANADA

Table 282-0087 Labour force survey estimates (LFS), by sex and age group, seasonally adjusted, monthly (persons unless otherwise noted)

	May 2018	April 2019	May 2019	# Change April 2019 - May 2019	% Change April 2019 - May 2019	# Change May 2018 - May 2019	% Change May 2018 - May 2019
Population (x 1,000)	30,233.8	30,625.8	30,662.4	36.6	0.1%	428.6	1.4%
Labour force (x 1,000)	19,710.7	20,187.8	20,138.6	-49.2	-0.24%	427.9	2.2%
Employment (x 1,000)	18,560.7	19,029.1	19,056.8	27.7	0.146%	496.1	2.7%
Employment full-time (x 1,000)	15,085.7	15,418.3	15,446.0	27.7	0.2%	360.3	2.4%
Employment part-time (x 1,000)	3,475.0	3,610.8	3,610.8	0.0	0.0%	135.8	3.9%
Unemployment (x 1,000)	1,150.0	1,158.7	1,081.8	-76.9	-6.6%	-68.2	-5.9%
Unemployment rate (rate)	5.8%	5.7%	5.4%	-0.3%		-0.4%	
Participation rate (rate)	65.4%	65.9%	65.7%	-0.2%		0.3%	
Employment rate (rate)	61.6%	62.1%	62.2%	0.1%		0.6%	

CANADA

Table 282-0088 Labour force survey estimates (LFS), employment by North American Industry Classification System (NAICS), seasonally adjusted, monthly (persons x 1,000)

	May 2018	April 2019	May 2019	# Change April 2019- May 2019	% Change April 2019- May 2019	# Change May 2018 - May 2019	% Change May 2018 - May 2019
Total Employed - All Industries	18,603.7	19,029.1	19,056.8	27.7	0.1%	453.1	2.4%
Goods-Producing Sector	3,910.5	3,988.0	3,992.9	4.9	0.1%	82.4	2.1%
Agriculture	280.8	287.1	289.8	2.7	0.9%	9.0	3.2%
Forestry, Fishing, Mining, Quarrying, Oil and Gas	338.4	344.1	345.4	1.3	0.4%	7.0	2.1%
Utilities	144.0	143.5	143.7	0.2	0.1%	-0.3	-0.2%
Construction	1,422.7	1,465.1	1,456.5	-8.6	-0.6%	33.8	2.4%
Manufacturing	1,724.7	1,748.2	1,757.6	9.4	0.5%	32.9	1.9%
Services-Producing Sector	14,693.2	15,041.1	15,063.9	22.8	0.2%	370.7	2.5%
Trade	2,791.1	2,861.3	2,866.0	4.7	0.2%	74.9	2.7%
Transportation and Warehousing	987.2	1,032.7	1,042.7	10.0	1.0%	55.5	5.6%
Finance, Insurance, Real Estate and Leasing	1,176.0	1,196.2	1,193.9	-2.3	-0.2%	17.9	1.5%
Professional, Scientific and Technical Services	1,475.1	1,525.0	1,542.2	17.2	1.1%	67.1	4.5%
Business, Building and Other Support Services	761.9	799.3	779.9	-19.4	-2.4%	18.0	2.4%
Educational Services	1,312.0	1,348.8	1,350.0	1.2	0.1%	38.0	2.9%
Health Care and Social Assistance	2,378.3	2,446.6	2,467.0	20.4	0.8%	88.7	3.7%
Information, Culture and Recreation	786.8	776.9	781.3	4.4	0.6%	-5.5	-0.7%
Accommodation and Food Services	1,258.5	1,208.2	1,195.8	-12.4	-1.0%	-62.7	-5.0%
Other Services	795.5	833.5	841.4	7.9	0.9%	45.9	5.8%
Public Administration	970.9	1,012.5	1,003.6	-8.9	-0.9%	32.7	3.4%

Unemployment Rates for Key Markets

	May 2018	April 2019	May 2019
Calgary	7.6%	7.6%	7.0%
Alberta	6.3%	6.7%	6.7%
Canada	5.8%	5.7%	5.4%
Montreal	6.0%	5.4%	5.4%
Ottawa	4.4%	5.5%	5.4%
Toronto	6.2%	5.5%	5.4%
Edmonton	6.6%	6.9%	6.8%
Vancouver	4.2%	4.4%	4.2%
Winnipeg	6.7%	5.2%	5.1%
Regina	6.3%	4.5%	4.4%
Saskatoon	6.9%	6.1%	6.1%
Wood Buffalo			

Facts & Figures

Highest Unemployment Rate during 2008-2010 downturn: 7.5% in January 2010

Highest Unemployment Rate during 1992-1996 downturn: 10.8% in July 1993
Number of additional jobs we would need to lose to reach this level: 35,388
(or amount labour force would need to grow by with no additional new jobs)

Highest Unemployment Rate during 1982-1985 downturn: 13.2% in March 1983
Number of additional jobs we would need to lose to reach this level: 57,940
(or amount labour force would need to grow by with no additional new jobs)

The last time Calgary had negative employment growth:

Between November 2009 and May 2010 Calgary lost 12,900 jobs.

Between November 2008 and July 2009 Calgary lost 27,000 jobs.

From peak employment in November 2008 to the lowest level reached in May 2010 - 33,400 jobs were lost in Calgary.

Calgary lost a small number of jobs July-August 2012 (2,400), again in March 2013 (3,200), and again (3,300) in February to April 2014.

Calgary

Number of jobs gained/lost in 2014:	17,600
Number of jobs gained/lost in 2015:	-8,100
Number of jobs gained/lost December 2014 to June 2016:	-13,300
Number of jobs gained/lost in 2016:	14,400
Number of jobs gained/lost in 2017:	15,500
Number of jobs gained/lost in 2018:	10,100
Number of jobs gained/lost in 2019:	28,100

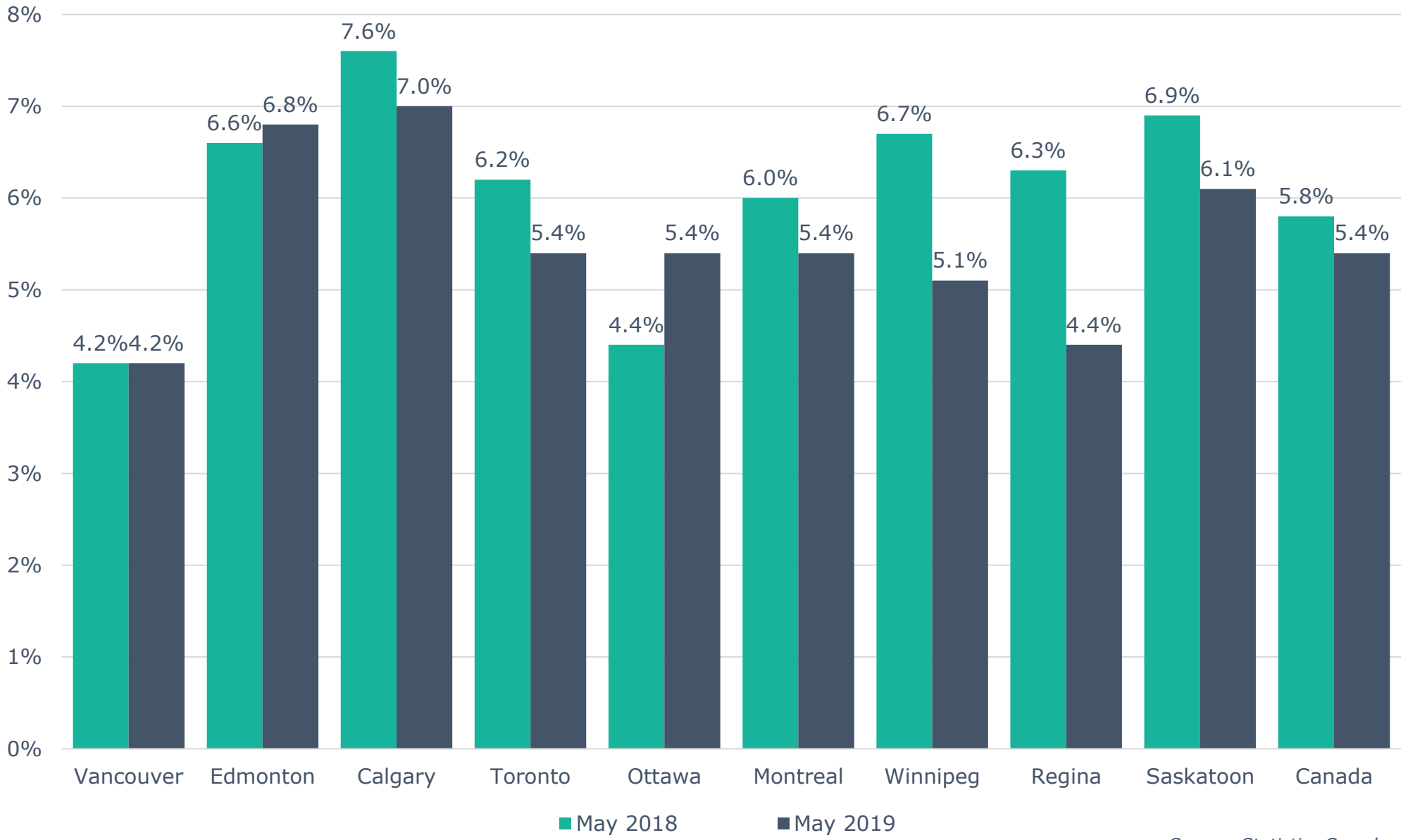
Alberta

Number of jobs gained/lost in 2014:	59,900
Number of jobs gained/lost in 2015:	-20,500
Number of jobs gained/lost December 2014 to June 2016:	-46,100
Number of jobs gained/lost in 2016:	-15,700
Number of jobs gained/lost in 2017:	54,900
Number of jobs gained/lost in 2018:	21,300
Number of jobs gained/lost in 2019:	21,200

Source: Table 282-0135 (Calgary, Table 282-0087 (Alberta), Statistics Canada

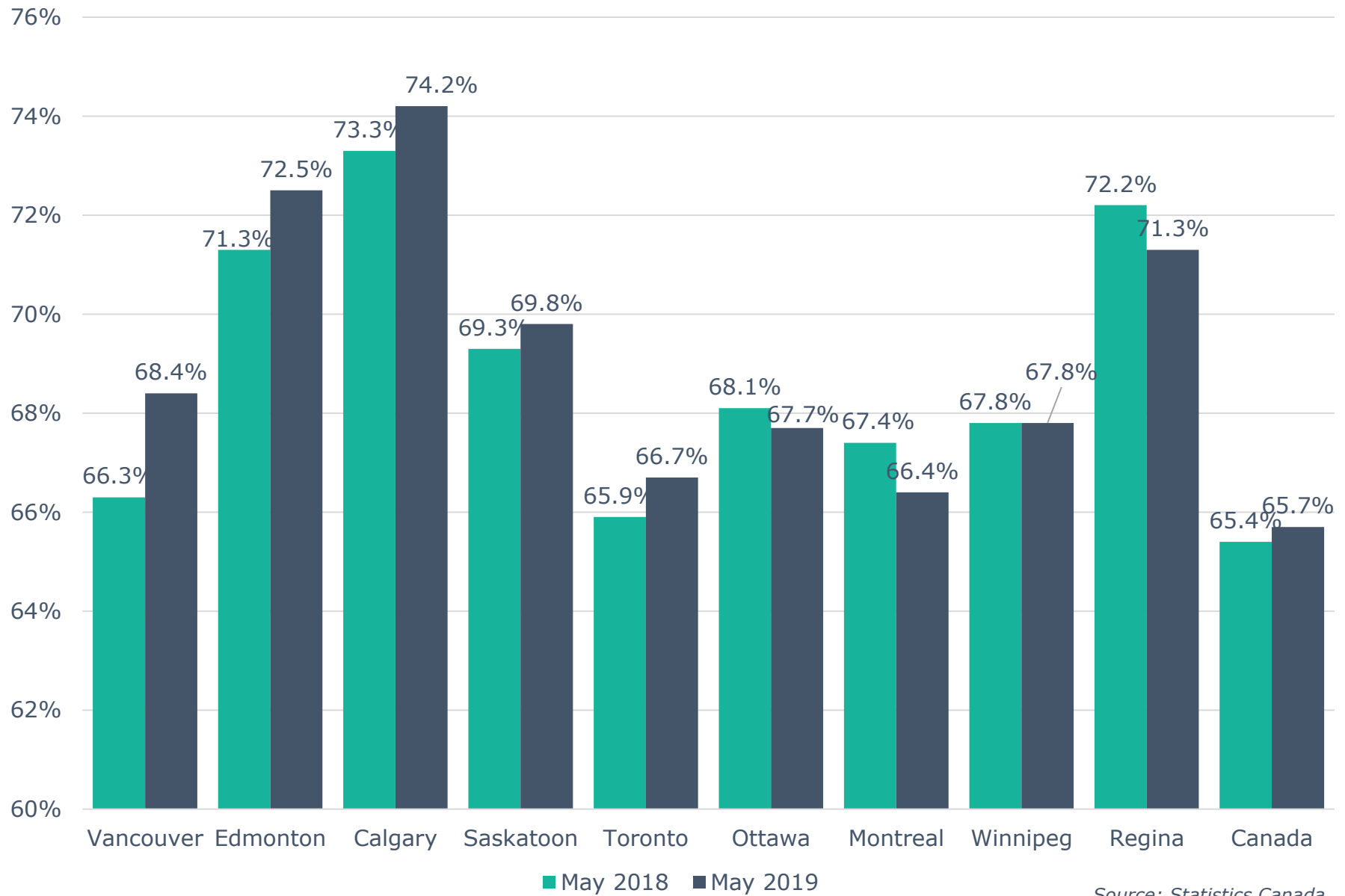
Note: Labour Force Survey, Employment, Seasonally Adjusted

Unemployment Rate Across Canada



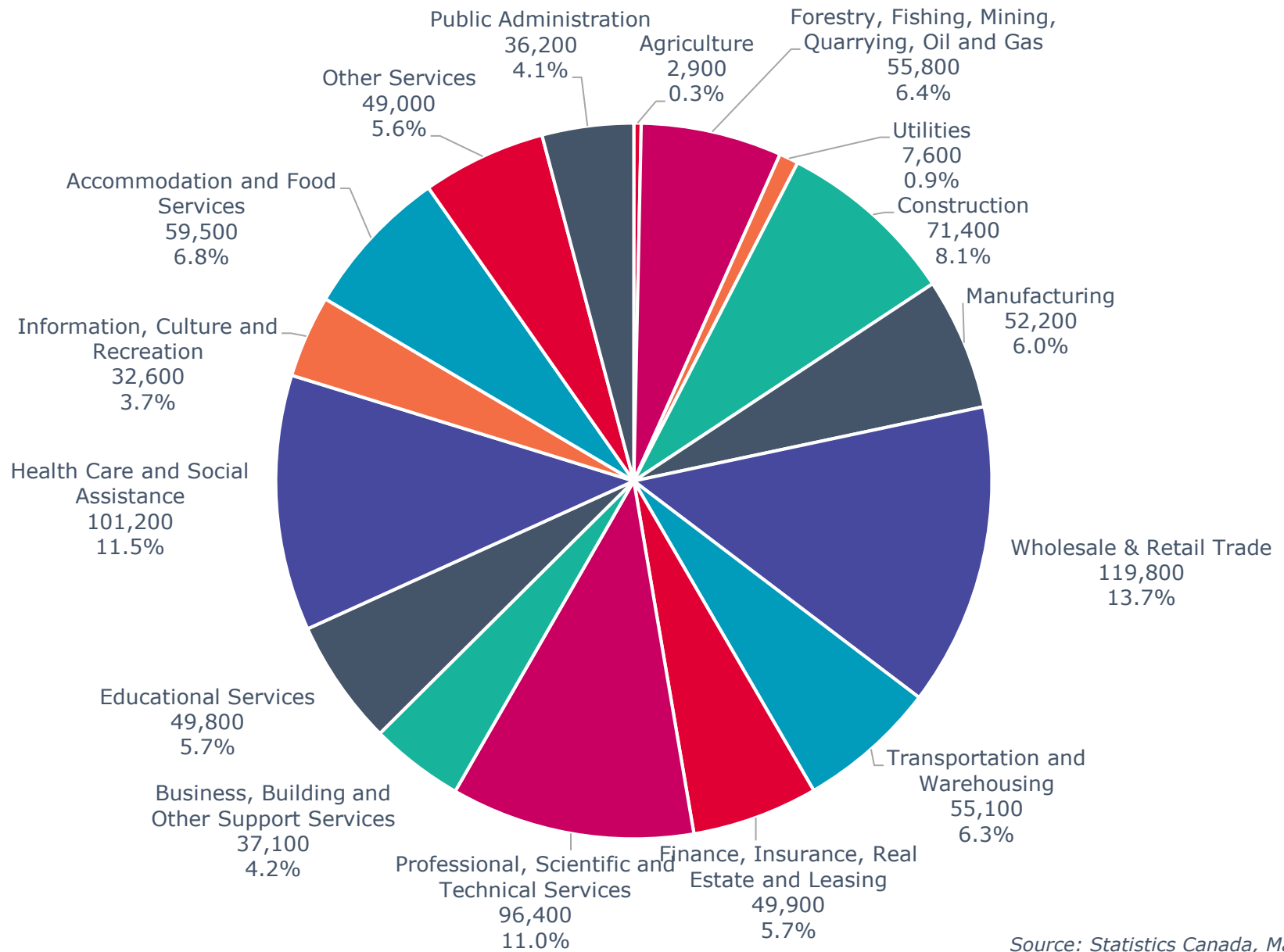
Source: Statistics Canada

Labour Force Participation Rate Across Canada



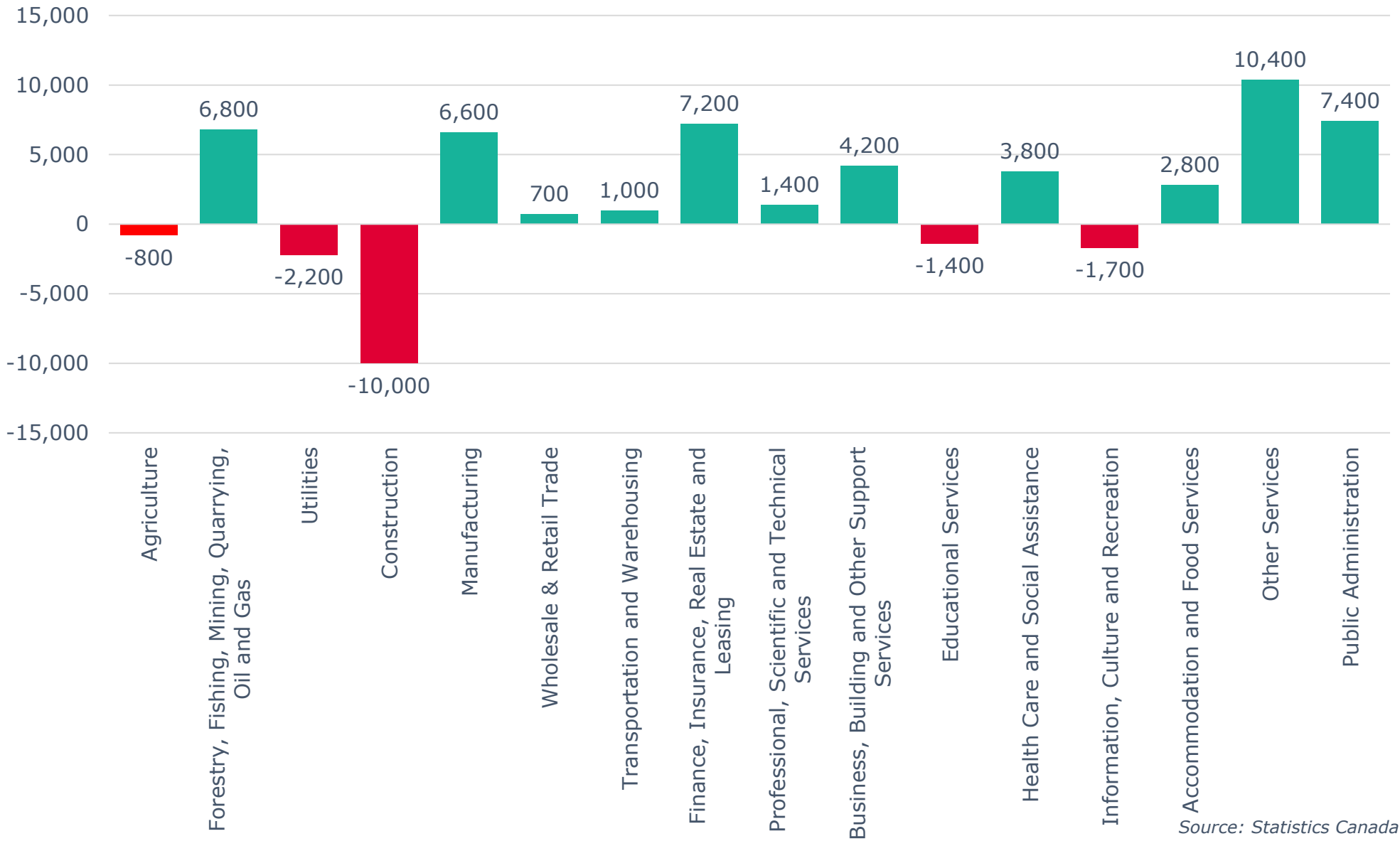
Source: Statistics Canada

Calgary CMA Employment by Industry (876,300)



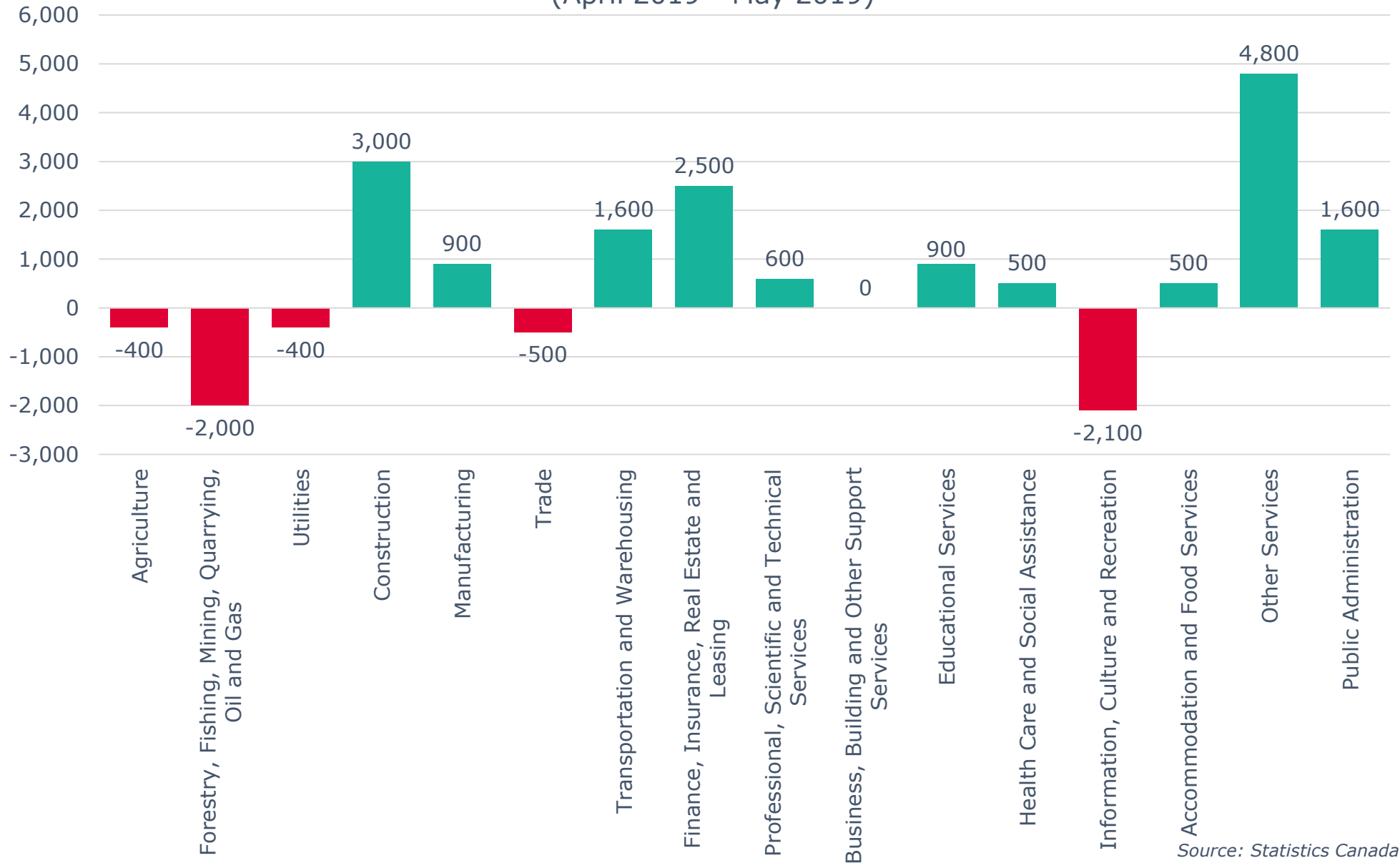
Source: Statistics Canada, May 2019

Calgary CMA 12-Month Net Jobs Gained or Lost by Industry (May 2019)



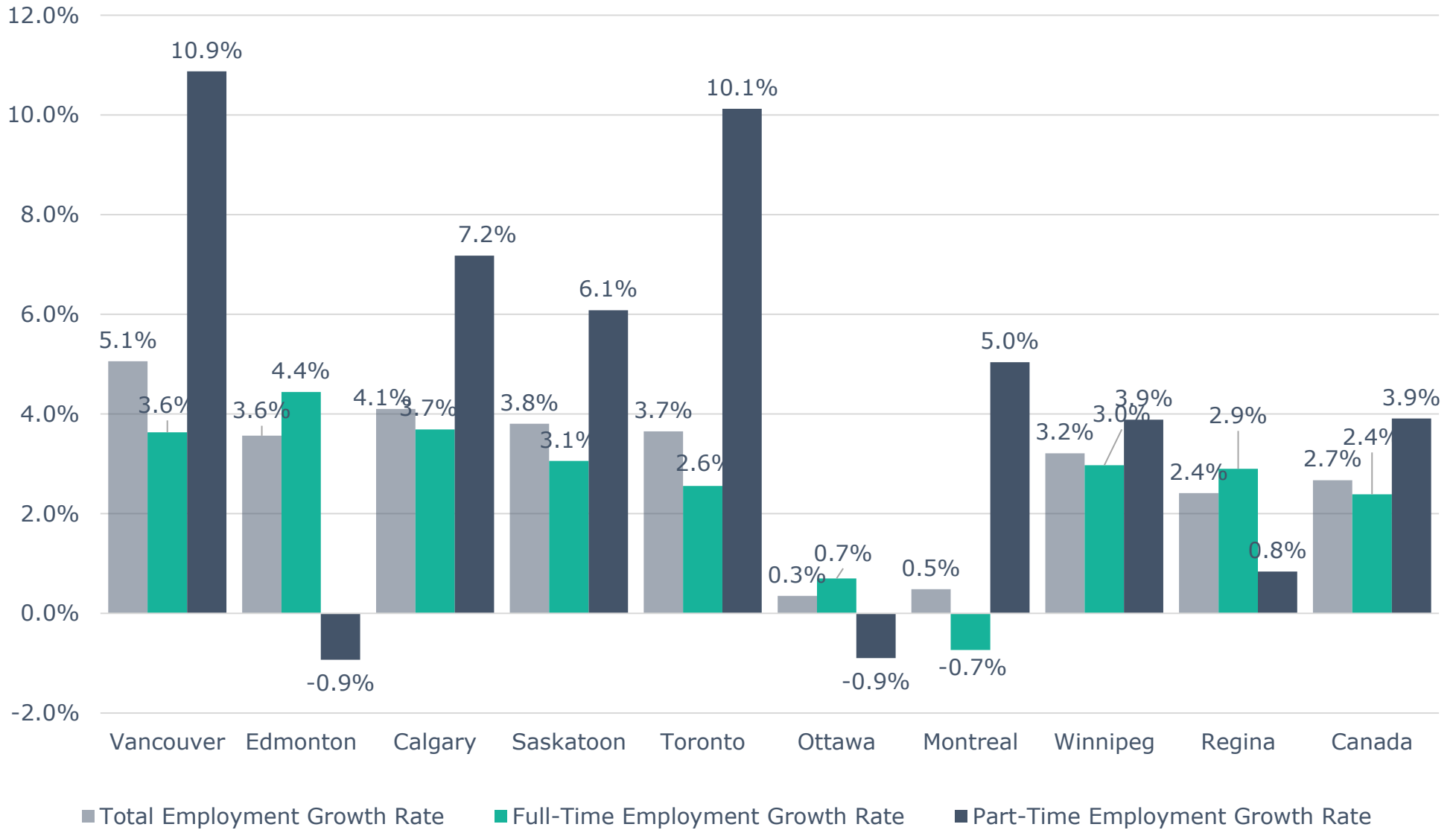
Source: Statistics Canada

Calgary CMA Monthly Net Jobs Gained or Lost by Industry (April 2019 - May 2019)



Source: Statistics Canada

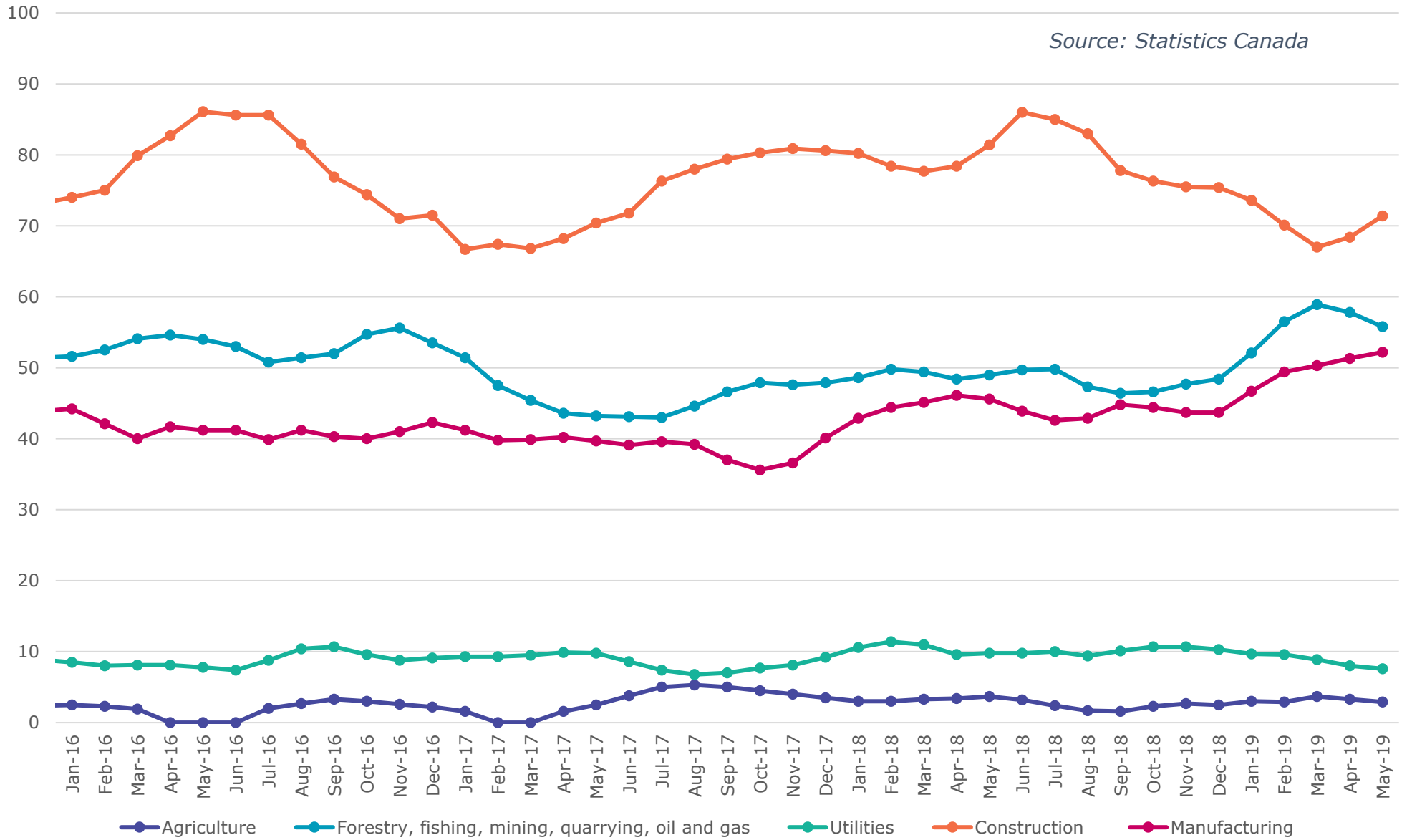
Annual Employment Growth



Source: Statistics Canada, May 2018 - May 2019

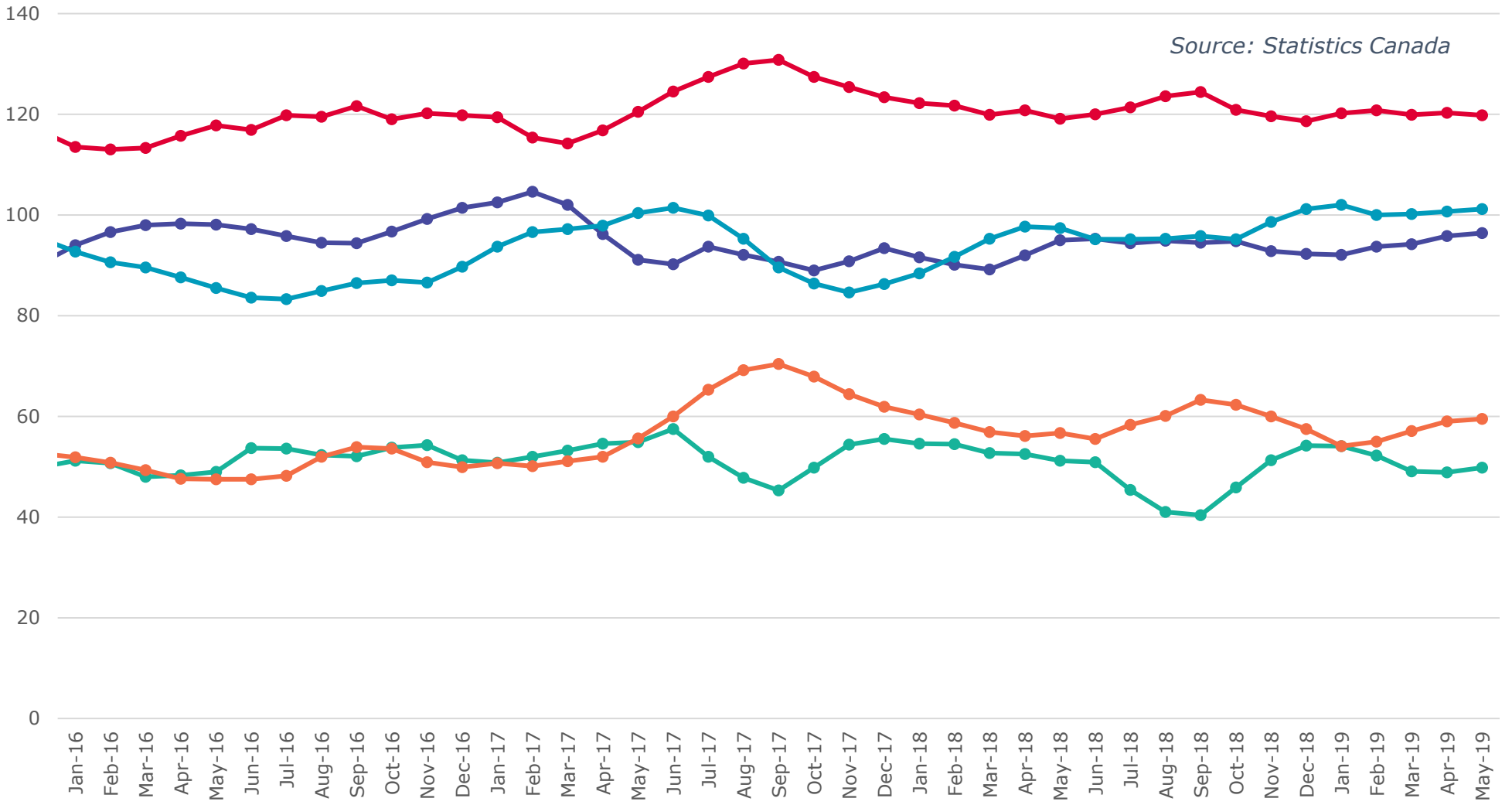
Calgary CMA Goods Producing Sectors - Number of Employees (In thousands)

Source: Statistics Canada



Calgary CMA Largest 5 Services Sector by Number of Employees (In thousands)

Source: Statistics Canada



- Wholesale and retail trade
- Health care and social assistance
- Accommodation and food services
- Professional, scientific and technical services
- Educational services

Calgary CMA Smallest 6 Service Sectors by Number of Employees
(In thousands)

