



Labour Force Survey Statistics December 2019

CALGARY CMA

Table 14-10-0294-02 (282-0135) Labour force survey estimates (LFS), by census metropolitan area based on 2011 census boundaries, 3-month moving average, seasonally adjusted, monthly (persons unless otherwise noted)							
	December 2018	November 2019	December 2019	# Change November 2019 - December 2019	% Change November 2019 - December 2019	# Change December 2018 - December 2019	% Change December 2018 - December 2019
Population (x 1,000)	1,255.2	1,283.6	1,286.0	2.4	0.2%	30.8	2.5%
Labour force (x 1,000)	910.8	942.1	936.6	-5.5	-0.6%	25.8	2.8%
Employment (x 1,000)	842.6	876.7	870.1	-6.6	-0.8%	27.5	3.3%
Unemployment (x 1,000)	68.2	65.4	66.5	1.1	1.7%	-1.7	-2.5%
Unemployment rate (rate)	7.5%	6.9%	7.1%	0.2%		-0.4%	
Participation rate (rate)	72.6%	73.4%	72.8%	-0.6%		0.2%	
Employment rate (rate)	67.1%	68.3%	67.7%	-0.6%		0.6%	

CALGARY CMA

Table 14-10-0095-01 (282-0128) Labour force survey estimates (LFS), by census metropolitan area based on 2011 census boundaries, 3-month moving average, unadjusted for seasonality, monthly (persons unless otherwise noted)							
	December 2018	November 2019	December 2019	# Change November 2019 - December 2019	% Change November 2019 - December 2019	# Change December 2018 - December 2019	% Change December 2018 - December 2019
Population (x 1,000)	1,255.2	1,283.6	1,286.0	2.4	0.2%	30.8	2.5%
Labour force (x 1,000)	905.7	937.6	929.6	-8.0	-0.9%	23.9	2.6%
Employment (x 1,000)	841.9	872.3	864.7	-7.6	-0.9%	22.8	2.7%
Full-time employment (x 1,000)	680.4	712.3	698.8	-13.5	-1.9%	18.4	2.7%
Part-time employment (x 1,000)	161.5	160.0	165.9	5.9	3.7%	4.4	2.7%
Unemployment (x 1,000)	63.8	65.2	64.9	-0.3	-0.5%	1.1	1.7%
Not in labour force (x 1,000)	349.5	346.0	356.4	10.4	3.0%	6.9	2.0%
Unemployment rate (rate)	7.0%	7.0%	7.0%	0.0%		0.0%	
Participation rate (rate)	72.2%	73.0%	72.3%	-0.7%		0.1%	
Employment rate (rate)	67.1%	68.0%	67.2%	-0.8%		0.1%	

CALGARY CMA

Table: 14-10-0097-01 (282-0130) Labour force survey estimates (LFS), employment by census metropolitan area based on 2011 census boundaries and North American Industry Classification System (NAICS), 3-month moving average, unadjusted for seasonality, monthly (persons x 1,000)

	December 2018	November 2019	December 2019	# Change November 2019 - December 2019	% Change November 2019 - December 2019	# Change December 2018 - December 2019	% Change December 2018 - December 2019
Total Employed - All Industries	841.9	872.3	864.7	-7.6	-0.9%	22.8	2.7%
Goods-Producing Sector	180.2	178.4	174.1	-4.3	-2.4%	-6.1	-3.4%
Agriculture	2.5	5.8	5.6	-0.2	-3.4%	3.1	124.0%
Forestry, Fishing, Mining, Quarrying, Oil and Gas	48.4	49.0	50.2	1.2	2.4%	1.8	3.7%
Utilities	10.3	10.8	10.7	-0.1	-0.9%	0.4	3.9%
Construction	75.4	73.0	70.5	-2.5	-3.4%	-4.9	-6.5%
Manufacturing	43.7	39.8	37.1	-2.7	-6.8%	-6.6	-15.1%
Services-Producing Sector	661.6	693.9	690.6	-3.3	-0.5%	29.0	4.4%
Wholesale & Retail Trade	118.6	115.2	114.4	-0.8	-0.7%	-4.2	-3.5%
Transportation and Warehousing	57.0	58.7	60.0	1.3	2.2%	3.0	5.3%
Finance, Insurance, Real Estate and Leasing	37.2	39.5	39.2	-0.3	-0.8%	2.0	5.4%
Professional, Scientific and Technical Services	92.3	108.8	108.8	0.0	0.0%	16.5	17.9%
Business, Building and Other Support Services	36.4	31.9	31.8	-0.1	-0.3%	-4.6	-12.6%
Educational Services	54.2	66.4	68.0	1.6	2.4%	13.8	25.5%
Health Care and Social Assistance	101.2	113.0	115.0	2.0	1.8%	13.8	13.6%
Information, Culture and Recreation	40.6	31.2	31.5	0.3	1.0%	-9.1	-22.4%
Accommodation and Food Services	57.5	60.7	60.1	-0.6	-1.0%	2.6	4.5%
Other Services	40.9	37.7	32.4	-5.3	-14.1%	-8.5	-20.8%
Public Administration	25.7	30.8	29.4	-1.4	-4.5%	3.7	14.4%

Province of Alberta

Table: 14-10-0287-01 (282-0087) Labour force survey estimates (LFS), by sex and age group, seasonally adjusted, monthly (persons unless otherwise noted)

	December 2018	November 2019	December 2019	# Change November 2019 - December 2019	% Change November 2019 - December 2019	# Change December 2018 - December 2019	% Change December 2018 - December 2019
Population (x 1,000)	3,493.9	3,550.8	3,554.4	3.6	0.1%	60.5	1.7%
Labour force (x 1,000)	2,501.7	2,521.2	2,513.7	-7.5	-0.30%	12.0	0.5%
Employment (x 1,000)	2,341.9	2,338.7	2,337.7	-1.0	0.0%	-4.2	-0.2%
Employment full-time (x 1,000)	1,919.0	1,922.4	1,898.8	-23.6	-1.2%	-20.2	-1.1%
Employment part-time (x 1,000)	422.9	416.3	438.9	22.6	5.4%	16.0	3.8%
Unemployment (x 1,000)	159.8	182.5	176.0	-6.5	-3.6%	16.2	10.1%
Unemployment rate (rate)	6.4%	7.2%	7.0%	-0.2%		0.6%	
Participation rate (rate)	71.6%	71.0%	70.7%	-0.3%		-0.9%	
Employment rate (rate)	67.0%	65.9%	65.8%	-0.1%		-1.2%	

Province of Alberta

Table: 14-10-0355-01 (282-0088) Labour force survey estimates (LFS), employment by North American Industry Classification System (NAICS), seasonally adjusted, monthly (persons x 1,000)

	December 2018	November 2019	December 2019	# Change November 2019 - December 2019	% Change November 2019 - December 2019	# Change December 2018 - December 2019	% Change December 2018 - December 2019
Total Employed - All Industries	2,341.9	2,338.7	2,337.7	-1.0	0.0%	-4.2	-0.2%
Goods-Producing Sector	601.2	583.3	577.6	-5.7	-1.0%	-23.6	-3.9%
Agriculture	48.4	50.2	49.6	-0.6	-1.2%	1.2	2.5%
Forestry, Fishing, Mining, Quarrying, Oil and Gas	151.6	138.4	136.1	-2.3	-1.7%	-15.5	-10.2%
Utilities	23.8	24.3	24.2	-0.1	-0.4%	0.4	1.7%
Construction	241.2	235.5	235.2	-0.3	-0.1%	-6.0	-2.5%
Manufacturing	136.3	135.0	132.5	-2.5	-1.9%	-3.8	-2.8%
Services-Producing Sector	1,740.7	1,755.3	1,760.1	4.8	0.3%	19.4	1.1%
Wholesale & Retail Trade	325.0	332.2	339.6	7.4	2.2%	14.6	4.5%
Transportation and Warehousing	139.8	135.6	132.3	-3.3	-2.4%	-7.5	-5.4%
Finance, Insurance, Real Estate and Leasing	102.9	106.1	108.8	2.7	2.5%	5.9	5.7%
Professional, Scientific and Technical Services	181.3	192.7	192.6	-0.1	-0.1%	11.3	6.2%
Business, Building and Other Support Services	92.4	78.4	76.9	-1.5	-1.9%	-15.5	-16.8%
Educational Services	154.3	161.0	163.5	2.5	1.6%	9.2	6.0%
Health Care and Social Assistance	289.5	303.7	302.6	-1.1	-0.4%	13.1	4.5%
Information, Culture and Recreation	77.3	75.4	77.1	1.7	2.3%	-0.2	-0.3%
Accommodation and Food Services	149.4	152.6	154.4	1.8	1.2%	5.0	3.3%
Other Services	118.1	108.4	105.0	-3.4	-3.1%	-13.1	-11.1%
Public Administration	110.6	109.3	107.3	-2.0	-1.8%	-3.3	-3.0%

CANADA

Table: 14-10-0287-01 (282-0087) Labour force survey estimates (LFS), by sex and age group, seasonally adjusted, monthly (persons unless otherwise noted)

	December 2018	November 2019	December 2019	# Change November 2019 - December 2019	% Change November 2019 - December 2019	# Change December 2018 - December 2019	% Change December 2018 - December 2019
Population (x 1,000)	30,485.2	30,932.8	30,964.7	31.9	0.1%	479.5	1.6%
Labour force (x 1,000)	19,932.2	20,286.5	20,270.1	-16.4	-0.08%	337.9	1.7%
Employment (x 1,000)	18,807.1	19,092.2	19,127.4	35.2	0.184%	320.3	1.7%
Employment full-time (x 1,000)	15,253.4	15,497.8	15,536.2	38.4	0.2%	282.8	1.9%
Employment part-time (x 1,000)	3,553.7	3,594.4	3,591.2	-3.2	-0.1%	37.5	1.1%
Unemployment (x 1,000)	1,125.1	1,194.3	1,142.8	-51.5	-4.3%	17.7	1.6%
Unemployment rate (rate)	5.6%	5.9%	5.6%	-0.3%		0.0%	
Participation rate (rate)	65.4%	65.6%	65.5%	-0.1%		0.1%	
Employment rate (rate)	61.7%	61.7%	61.8%	0.1%		0.1%	

CANADA

Table: 14-10-0355-01 (282-0088) Labour force survey estimates (LFS), employment by North American Industry Classification System (NAICS), seasonally adjusted, monthly (persons x 1,000)

	December 2018	November 2019	December 2019	# Change November 2019- December 2019	% Change November 2019- December 2019	# Change December 2018 - December 2019	% Change December 2018 - December 2019
Total Employed - All Industries	18,807.1	19,092.2	2,337.7	-16,754.5	-87.8%	-16,469.4	-87.6%
Goods-Producing Sector	3,969.5	3,906.8	3,922.5	15.7	0.4%	-47.0	-1.2%
Agriculture	283.8	294.2	291.6	-2.6	-0.9%	7.8	2.7%
Forestry, Fishing, Mining, Quarrying, Oil and Gas	344.1	316.4	315.3	-1.1	-0.3%	-28.8	-8.4%
Utilities	148.7	135.0	133.8	-1.2	-0.9%	-14.9	-10.0%
Construction	1,453.4	1,465.3	1,482.3	17.0	1.2%	28.9	2.0%
Manufacturing	1,739.5	1,695.9	1,699.4	3.5	0.2%	-40.1	-2.3%
Services-Producing Sector	14,837.6	15,185.5	15,204.9	19.4	0.1%	367.3	2.5%
Trade	2,774.5	2,845.6	2,851.8	6.2	0.2%	77.3	2.8%
Transportation and Warehousing	1,026.7	1,031.6	1,026.5	-5.1	-0.5%	-0.2	0.0%
Finance, Insurance, Real Estate and Leasing	1,166.1	1,239.5	1,240.9	1.4	0.1%	74.8	6.4%
Professional, Scientific and Technical Services	1,489.2	1,578.9	1,574.9	-4.0	-0.3%	85.7	5.8%
Business, Building and Other Support Services	813.5	765.6	759.0	-6.6	-0.9%	-54.5	-6.7%
Educational Services	1,340.8	1,395.8	1,389.9	-5.9	-0.4%	49.1	3.7%
Health Care and Social Assistance	2,456.2	2,525.1	2,531.6	6.5	0.3%	75.4	3.1%
Information, Culture and Recreation	759.8	758.6	765.0	6.4	0.8%	5.2	0.7%
Accommodation and Food Services	1,246.8	1,220.4	1,245.3	24.9	2.0%	-1.5	-0.1%
Other Services	805.8	804.1	805.1	1.0	0.1%	-0.7	-0.1%
Public Administration	958.3	1,020.3	1,014.8	-5.5	-0.5%	56.5	5.9%

Unemployment Rates for Key Markets

	December 2018	November 2019	December 2019
Calgary	7.5%	6.9%	7.1%
Alberta	6.4%	7.2%	7.0%
Canada	5.6%	5.9%	5.6%
Montreal	6.0%	5.8%	6.0%
Ottawa	5.0%	4.4%	4.4%
Toronto	6.0%	4.4%	4.4%
Edmonton	6.3%	7.7%	8.0%
Vancouver	4.5%	4.9%	4.8%
Winnipeg	5.8%	5.3%	5.3%
Regina	5.7%	6.0%	6.0%
Saskatoon	5.6%	5.5%	5.7%
Wood Buffalo			

Facts & Figures

Highest Unemployment Rate during 2008-2010 downturn: 7.5% in January 2010

Highest Unemployment Rate during 1992-1996 downturn: 10.8% in July 1993

Number of additional jobs we would need to lose to reach this level: 34,653

(or amount labour force would need to grow by with no additional new jobs)

Highest Unemployment Rate during 1982-1985 downturn: 13.2% in March 1983

Number of additional jobs we would need to lose to reach this level: 57,131

(or amount labour force would need to grow by with no additional new jobs)

The last time Calgary had negative employment growth:

Between November 2009 and May 2010 Calgary lost 12,900 jobs.

Between November 2008 and July 2009 Calgary lost 27,000 jobs.

From peak employment in November 2008 to the lowest level reached in May 2010 - 33,400 jobs were lost in Calgary.

Calgary lost a small number of jobs July-August 2012 (2,400), again in March 2013 (3,200), and again (3,300) in February to April 2014.

Calgary

Number of jobs gained/lost in 2014: 17,600

Number of jobs gained/lost in 2015: (8,100)

Number of jobs gained/lost December 2014 to June 2016: (13,300)

Number of jobs gained/lost in 2016: 14,400

Number of jobs gained/lost in 2017: 15,500

Number of jobs gained/lost in 2018: 10,100

Number of jobs gained/lost in 2019: 24,600

Alberta

Number of jobs gained/lost in 2014: 59,900

Number of jobs gained/lost in 2015: (20,500)

Number of jobs gained/lost December 2014 to June 2016: (46,100)

Number of jobs gained/lost in 2016: (15,700)

Number of jobs gained/lost in 2017: 54,900

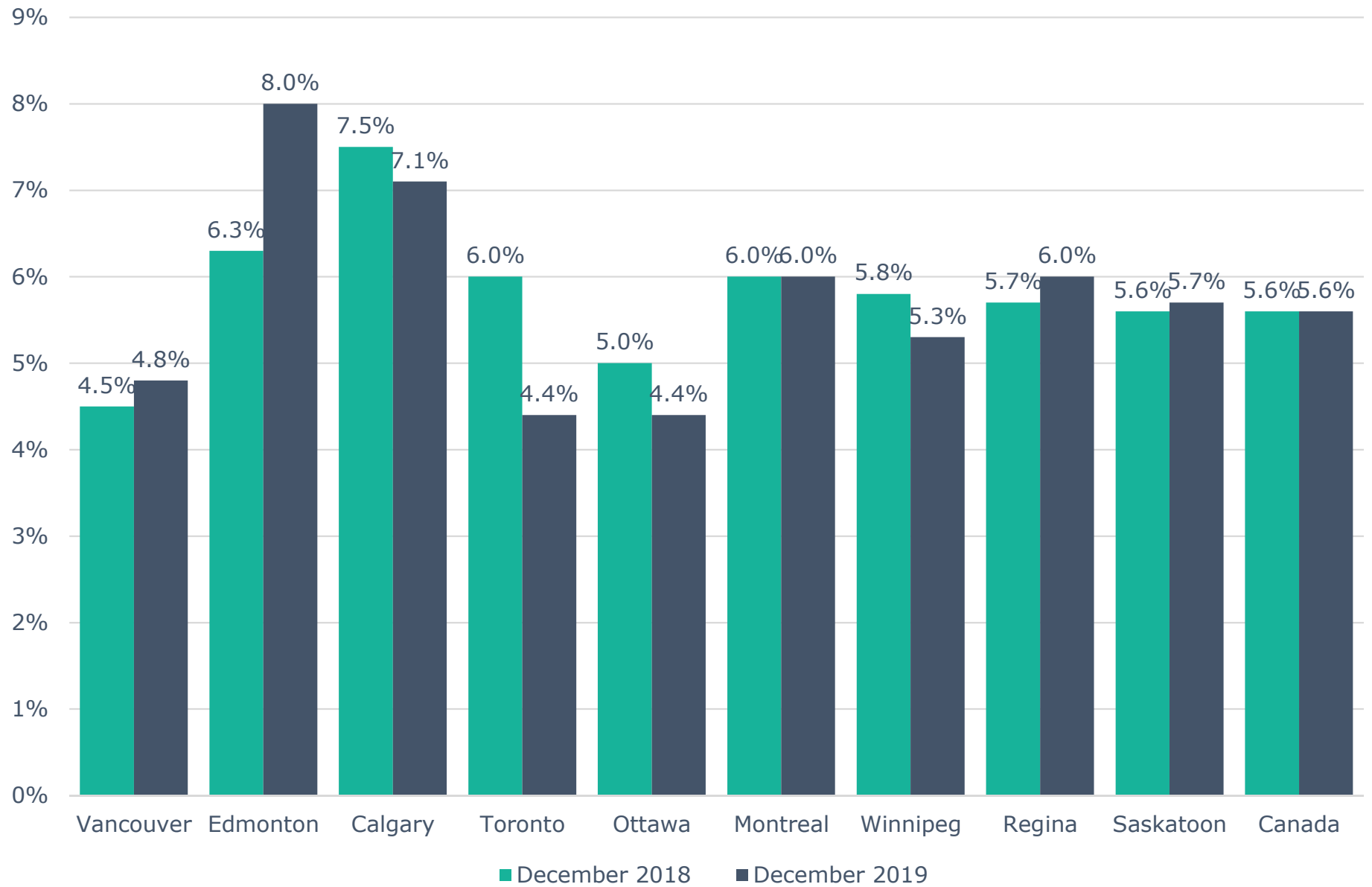
Number of jobs gained/lost in 2018: 21,300

Number of jobs gained/lost in 2019: 11,300

Source: Calgary - Table 14-10-0294-02 (282-0135); Alberta - 14-10-0287-01 (282-0087); Statistics Canada

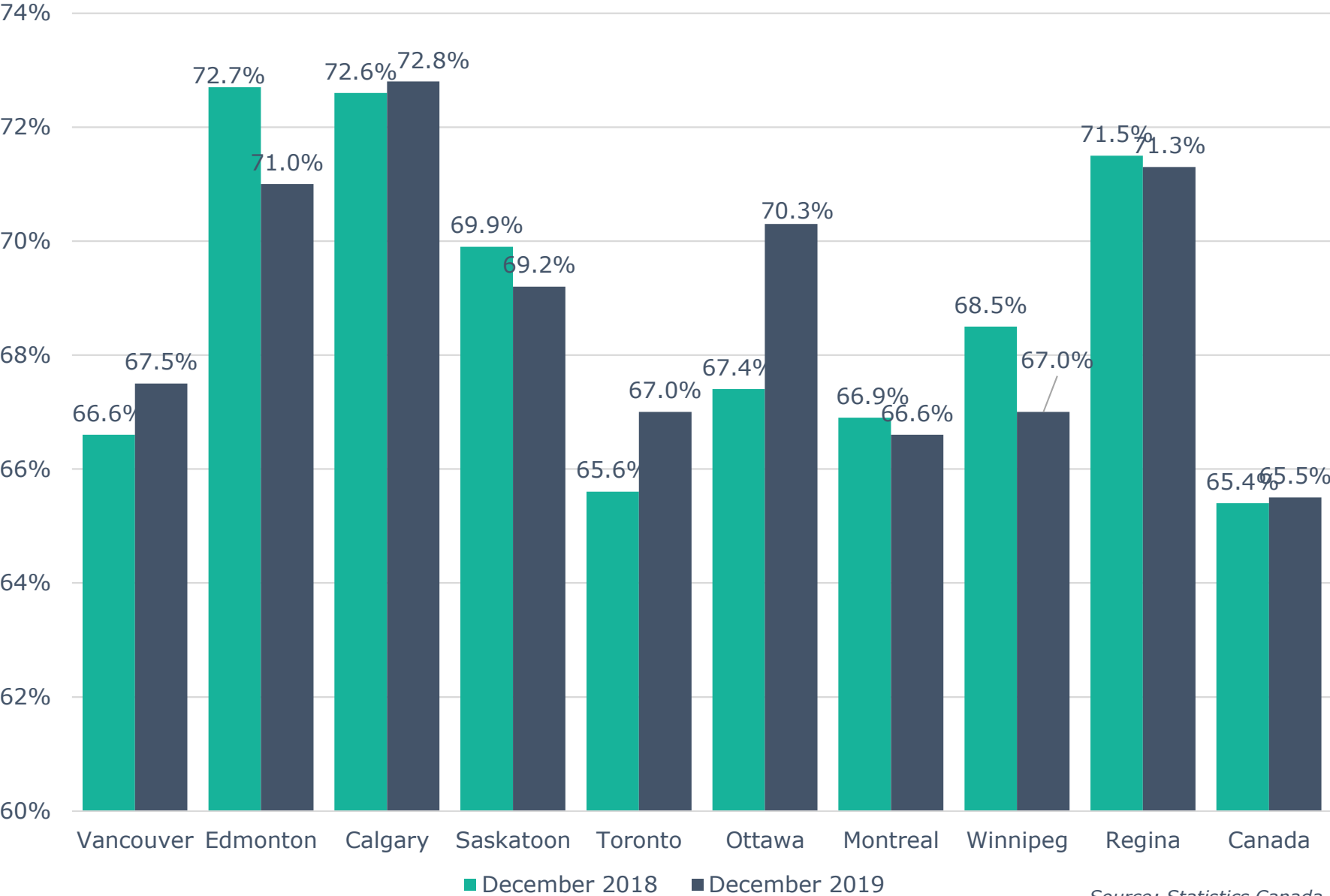
Note: Labour Force Survey, Employment, Seasonally Adjusted

Unemployment Rate Across Canada



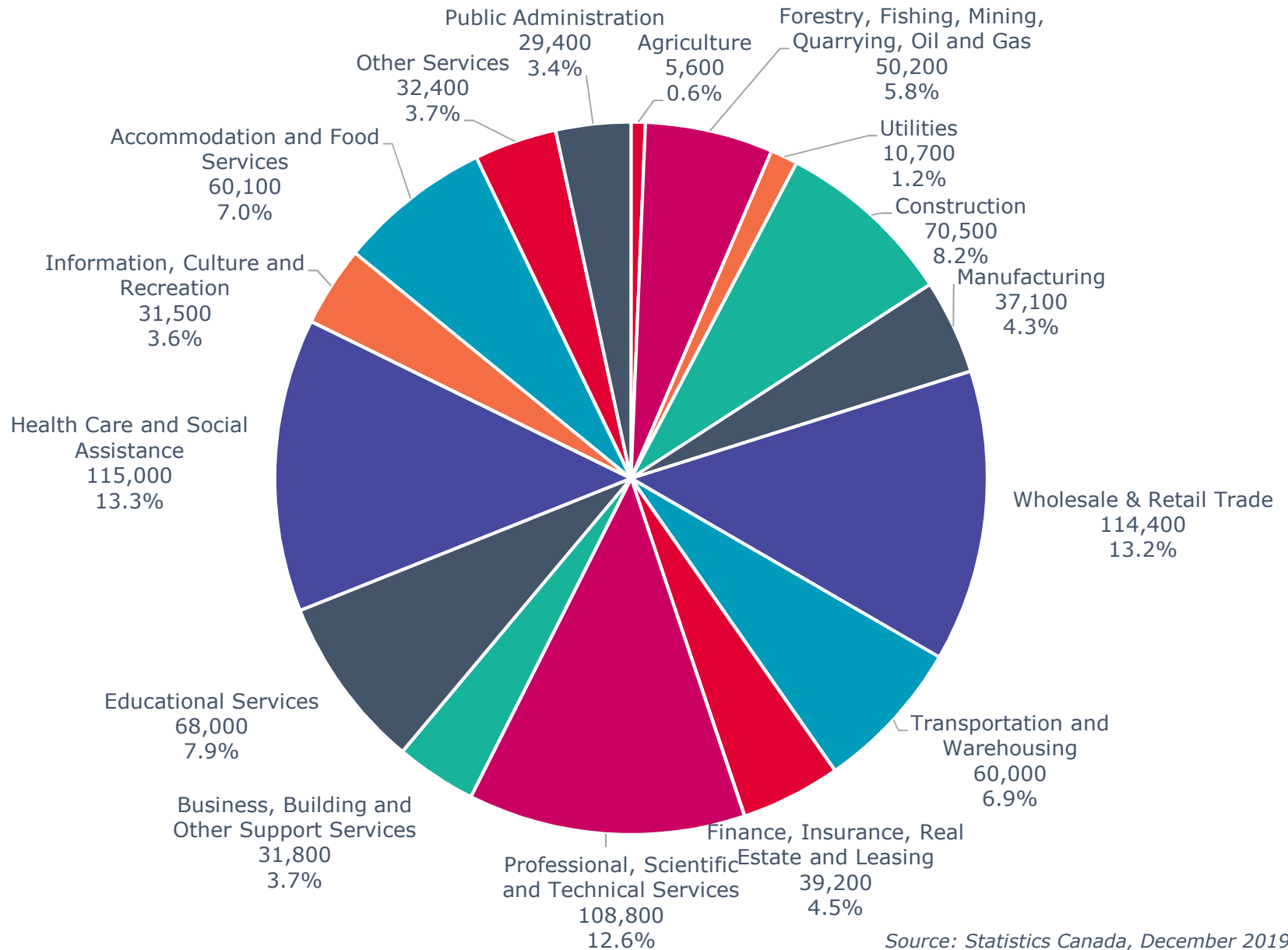
Source: Statistics Canada

Labour Force Participation Rate Across Canada



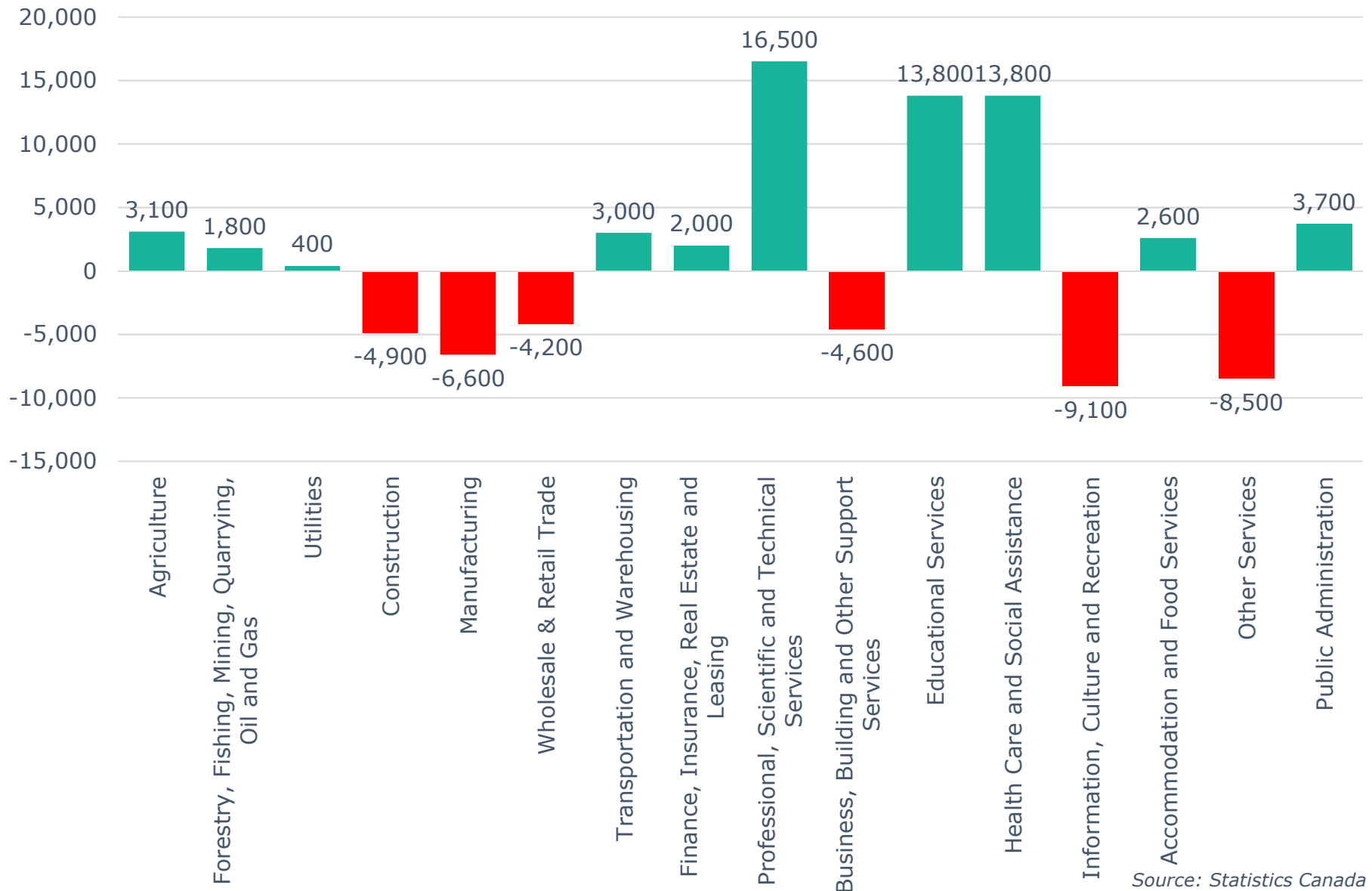
Source: Statistics Canada

Calgary CMA Employment by Industry (864,700)



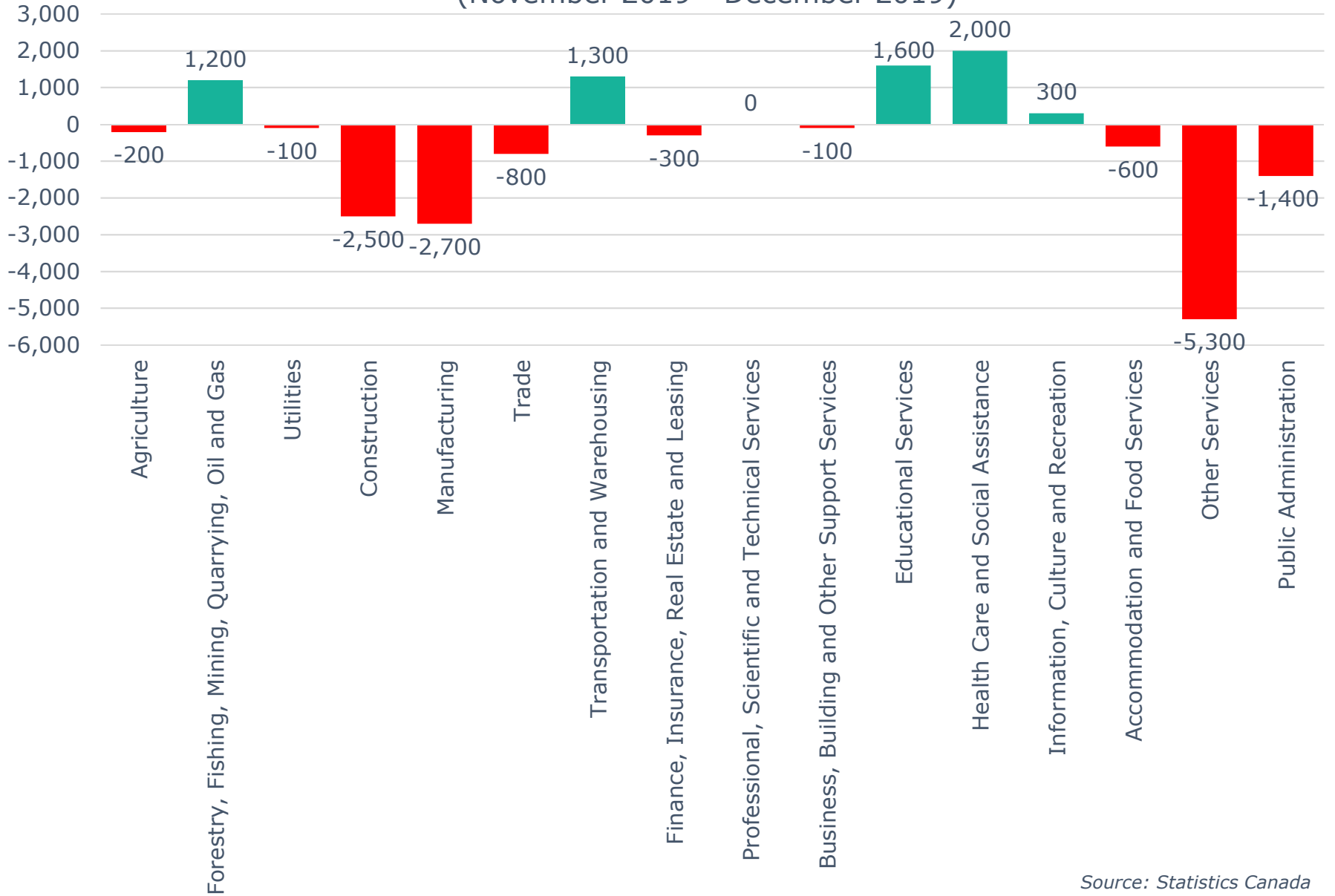
Source: Statistics Canada, December 2019

Calgary CMA 12-Month Net Jobs Gained or Lost by Industry (December 2019)



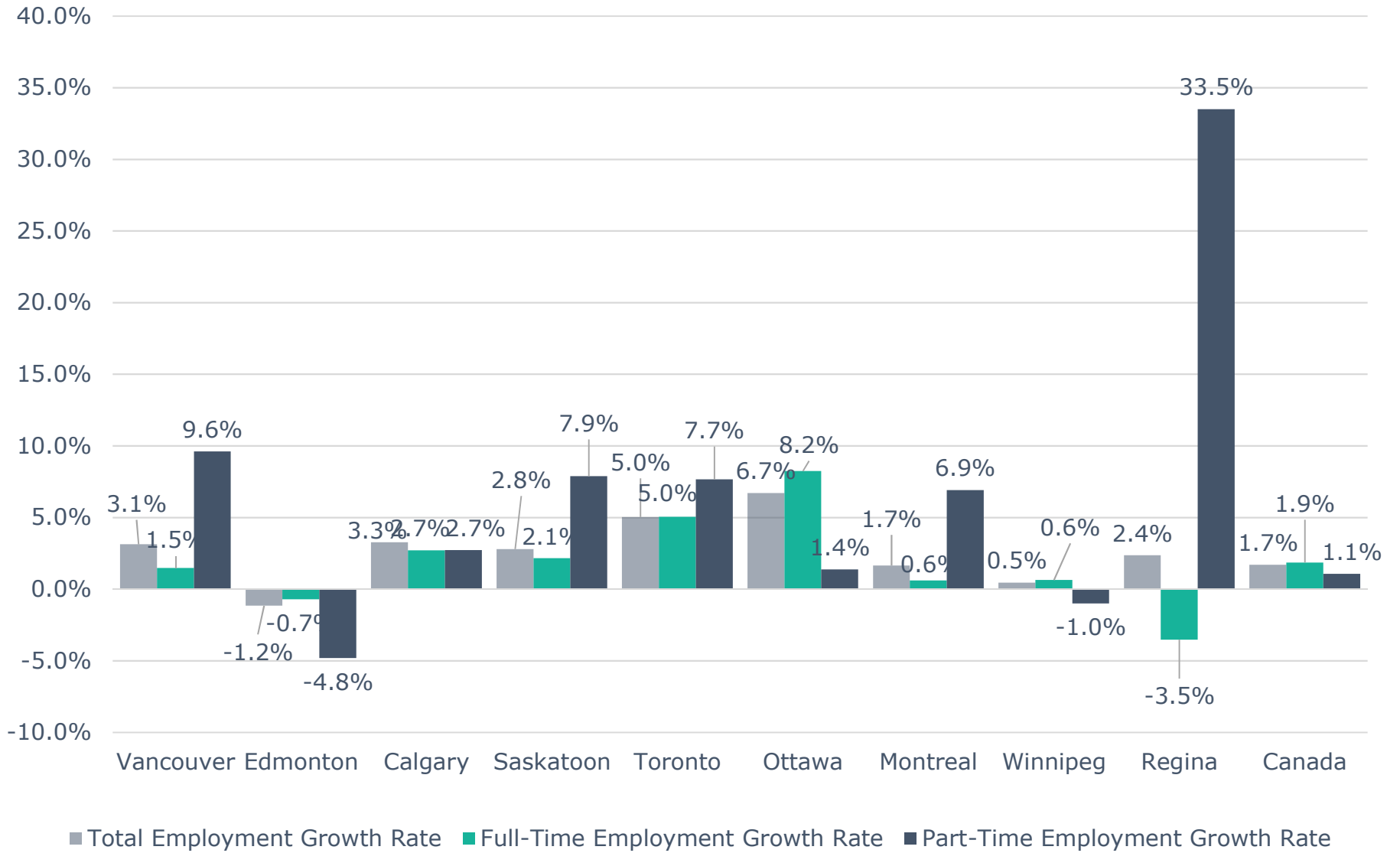
Source: Statistics Canada

Calgary CMA Monthly Net Jobs Gained or Lost by Industry (November 2019 - December 2019)



Source: Statistics Canada

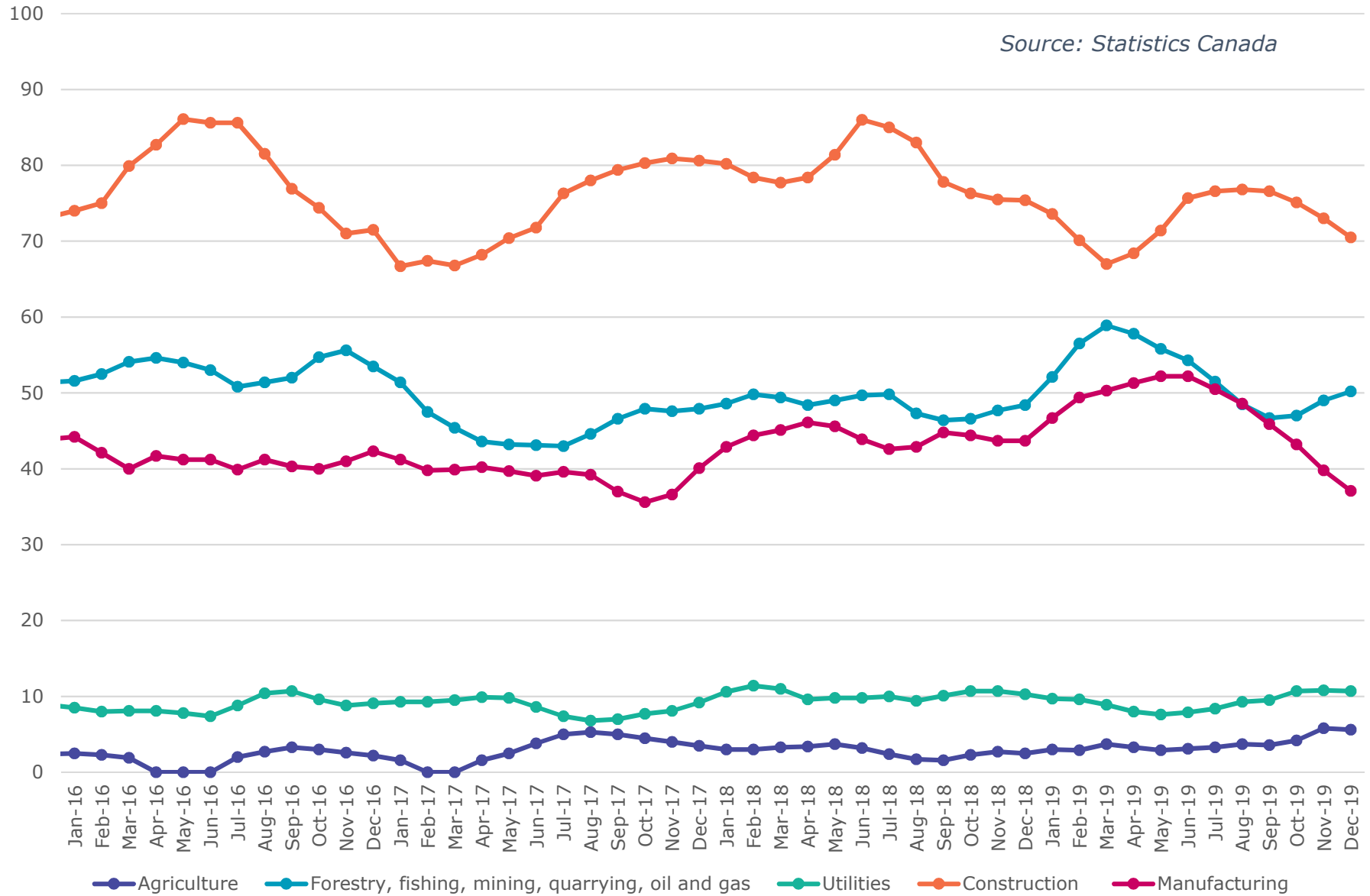
Annual Employment Growth



Source: Statistics Canada, December 2018 - December 2019

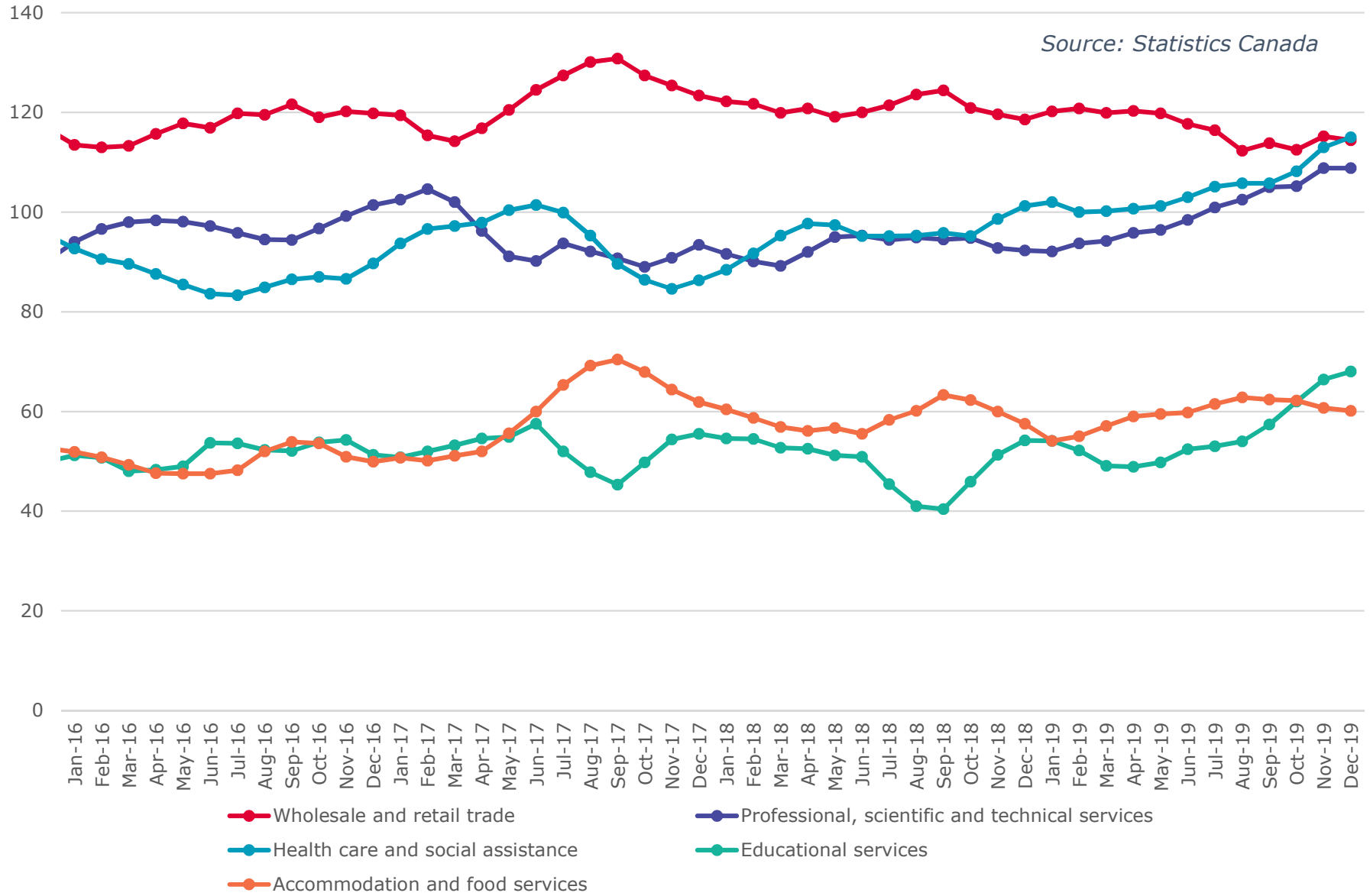
Calgary CMA Goods Producing Sectors - Number of Employees (In thousands)

Source: Statistics Canada



Calgary CMA Largest 5 Services Sector by Number of Employees (In thousands)

Source: Statistics Canada



Calgary CMA Smallest 6 Service Sectors by Number of Employees (In thousands)

